

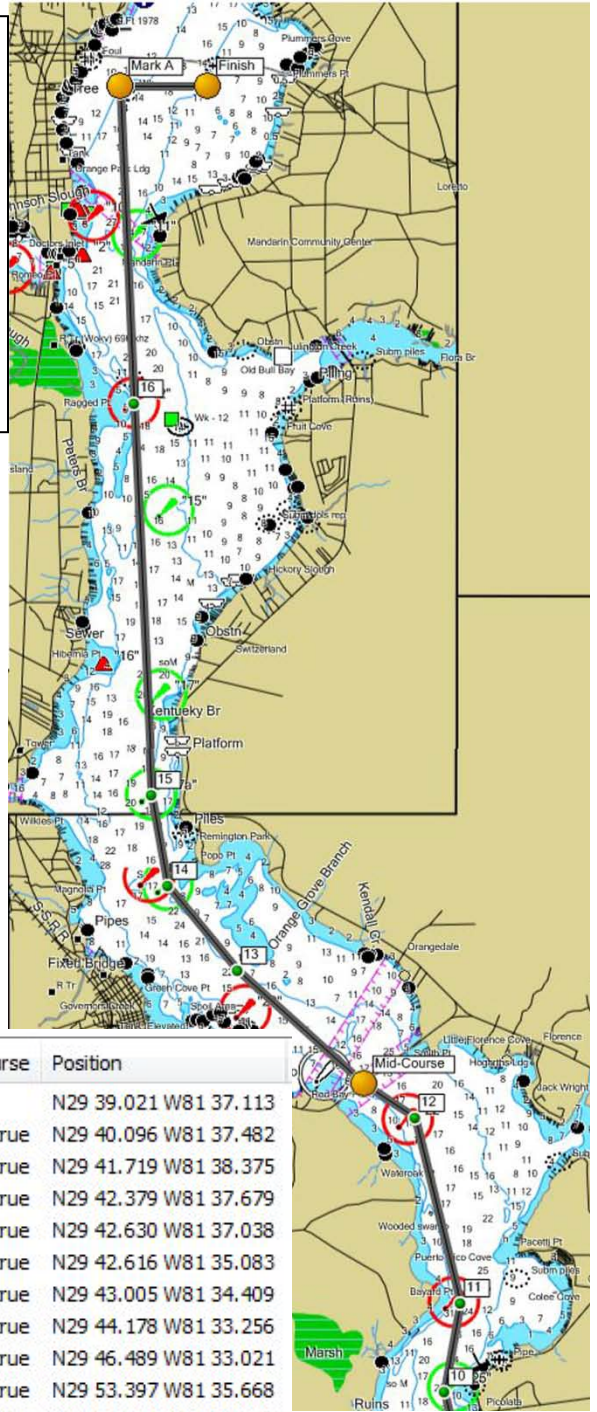
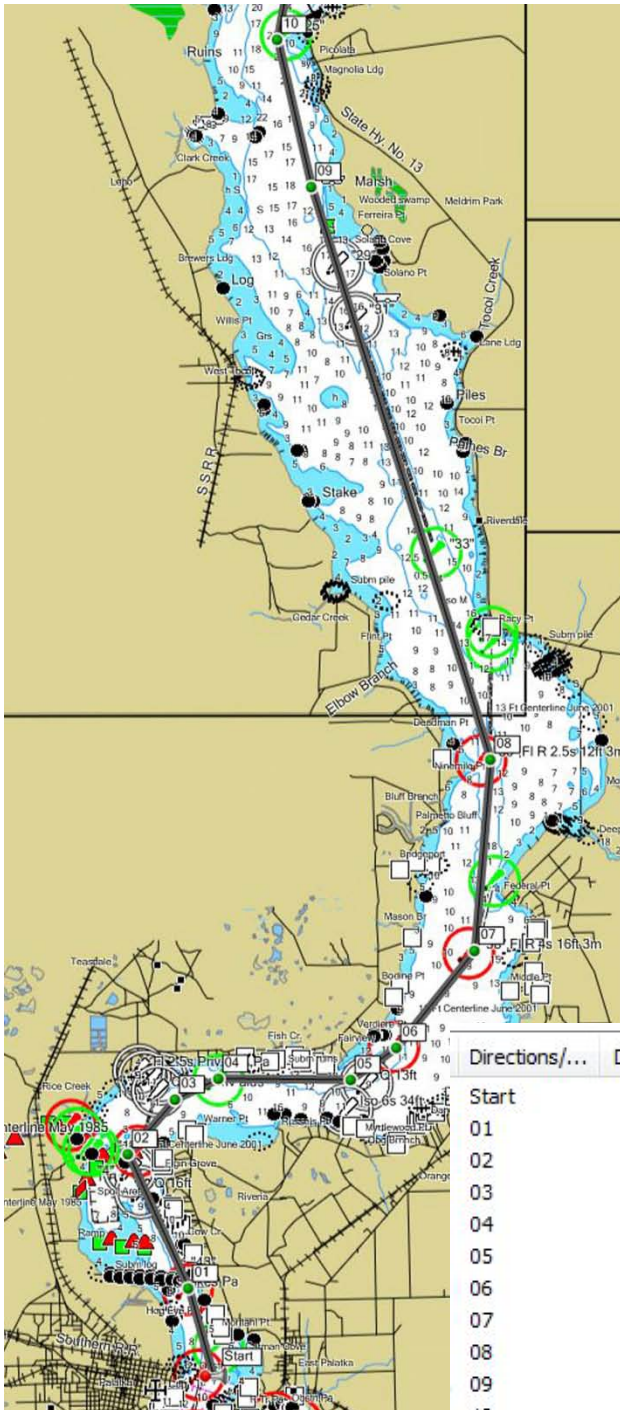
Start	N29 39.017 W81.37.323
Mid Course Gate	N29 58.931 W81 37.366
Mark A (Leave to Stbd)	N30 11.1 W81 41.0
Finish	N30 11.1 W81 39.7

Mug Race 2010 South Course Diagram

Caution - Chart is not for navigation.

Direction of Travel – Bottom to Top Left First

Courses shown do not depict a course to be sailed. They display distances between points and are for general information.



Directions/...	Distance	Leg Length	Course	Position
Start	0 ft			N29 39.021 W81 37.113
01	1.1 nm	1.1 nm	343° true	N29 40.096 W81 37.482
02	2.9 nm	1.8 nm	334° true	N29 41.719 W81 38.375
03	3.8 nm	0.9 nm	43° true	N29 42.379 W81 37.679
04	4.4 nm	0.6 nm	66° true	N29 42.630 W81 37.038
05	6.1 nm	1.7 nm	90° true	N29 42.616 W81 35.083
06	6.8 nm	0.7 nm	56° true	N29 43.005 W81 34.409
07	8.4 nm	1.5 nm	40° true	N29 44.178 W81 33.256
08	10.7 nm	2.3 nm	5° true	N29 46.489 W81 33.021
09	18.0 nm	7.3 nm	342° true	N29 53.397 W81 35.668
10	19.8 nm	1.8 nm	346° true	N29 55.178 W81 36.172
11	20.9 nm	1.1 nm	11° true	N29 56.260 W81 35.934
12	23.3 nm	2.3 nm	346° true	N29 58.522 W81 36.606
Mid-Course	24.1 nm	0.8 nm	302° true	N29 58.931 W81 37.366
13	26.2 nm	2.1 nm	311° true	N30 00.319 W81 39.243
14	27.6 nm	1.4 nm	319° true	N30 01.353 W81 40.280
15	28.7 nm	1.1 nm	349° true	N30 02.460 W81 40.522
16	33.5 nm	4.8 nm	357° true	N30 07.234 W81 40.795
Mark A	37.4 nm	3.9 nm	357° true	N30 11.100 W81 41.000
Finish	38.5 nm	1.1 nm	90° true	N30 11.100 W81 39.700