



THE HANGOVER RACE
January 1, 2012
The Rudder Club of Jacksonville
8533 Malaga Avenue
Jacksonville, FL 32244

Sailing Instructions

1. RULES

- 1.1 The race will be governed by The Racing Rules of Sailing (RRS) and the prescriptions of US SAILING
- 1.2 Racing Rule 41 is changed by SI 15.4.
- 1.3 Racing Rules 35, A4 and A5 of the RRS are changed by SI 13
- 1.4 Rule 61.3 "Protest Time Limit" is changed by SI 14.2.

2. NOTICES TO COMPETITORS

Notices to competitors will be posted on the official notice board on the north exterior wall of the Rudder Club.

3. CHANGES IN THE SAILING INSTRUCTIONS

Any change in the Sailing Instructions will be posted on the official bulletin board on the north exterior wall of the Rudder Club before 0900 on January 1st.

4. SIGNALS MADE ASHORE

- 4.1 Signals made ashore will be displayed from the flag pole located on the north side of the Rudder Club.
- 4.2 Code Flag "AP", Answering Pennant, displayed ashore with two sound signals (one when lowered) means "The race is postponed: do not leave the dock." The warning signal will be made not less than 45 minutes after AP is lowered.

5. SCHEDULE OF RACE

- 5.1 Schedule 1 January 2012
Registration: 11:00am - 11:30am
Sailors meeting: 12:00 pm
Warning signal for first class: 12:50 pm
- 5.2 All registered boats will race as one class.
- 5.3 There will be one race.

6. CLASS FLAGS

Class flag will be the International Numeral Pennant One as depicted under Race Signals in the RRS.



7. RACING AREA

The racing area will be in the St. Johns River between the Buckman Bridge to the south and the Fuller Warren Bridge to the north as depicted on NOAA Chart 11492.

8. THE COURSE

The course will be a windward leeward and depicted on a white board displayed on the Race committee boat. The final leg will be from windward mark directly to the finish in the vicinity of the pier.

9. MARKS

- 9.1 The starting mark will be a yellow sphere set to the left of the committee boat relative to the first leg of the course.
- 9.1 The windward mark will be an orange cylinder set to windward of the starting line and designated as "W" or a River Navigation Mark as depicted on attachment A.
- 9.2 The leeward mark will be the starting mark and will be a yellow cylinder. It will be designated "L" on the course board.
- 9.3 The finish mark will be a small orange sphere.
- 9.4 All marks will be left to port

10. START

The starting line will be between an orange flag flown on the Race Committee Boat and a mark set toward the left side of the course from the RC boat. The starting line will be designated "S" on the course board.

11 CHANGE OF COURSE AFTER THE START

- 11.1 To change the next leg of the course, the race committee will move the original mark to a new position.
- 11.2 A change of course will be signaled near the mark beginning the leg being changed by a race committee boat that will display code flag "CHARLIE" and sound a horn periodically.

12 THE FINISH

The finish line will be between an orange flag on the northeast corner of the Rudder Club Pier and an orange mark set off the pier or the committee boat and an orange mark set to its right relative to the last leg of the course. If the orange flag is flown from the committee boat the boat will be anchored in the vicinity of the pier. The finish line will be designated "F" on the course board.

13 SCORING AND TIME LIMIT

- 13.1 All boats will be scored in accordance with the North American Portsmouth Yardstick.
- 13.2 Time Limit
The time limit shall be 3 hours for each class. Yachts failing to finish within 45 minutes corrected time after the first yacht of their class finishes will be scored "Did not Finish." This changes rules 35, A4 and A5.

14 PROTESTS AND REQUESTS FOR REDRESS

- 14.1 Protests and requests for redress shall be written on forms available at the Rudder Club. They shall be filed with the Race Chairman.
- 14.2 The protest time limit is 90 minutes after the last boat has finished. This changes RRS 61.3.
- 14.3 Protest notices will be posted on the Official Bulletin Board within 30 minutes following the protest time limit.

15 SAFETY

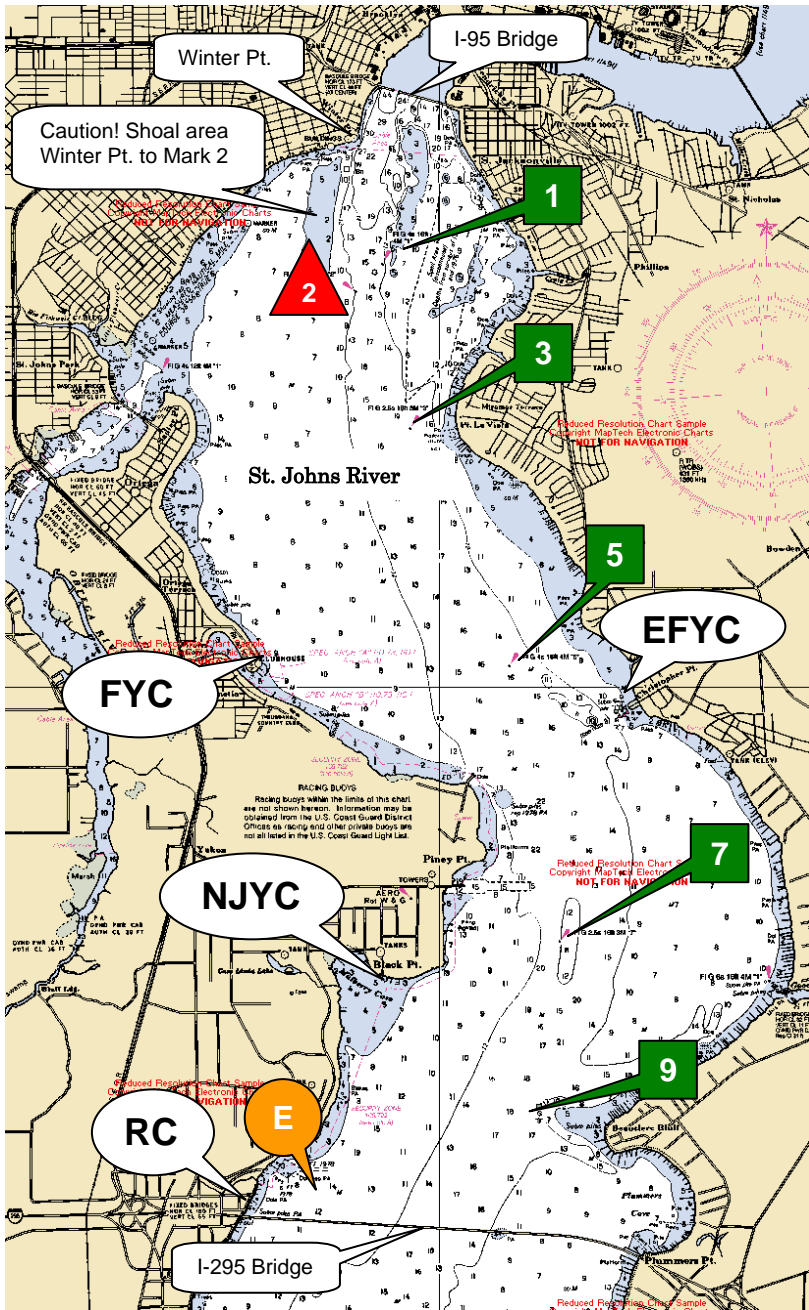
- 15.1 All competitors are required to conform to the U.S. Coast Guard regulations and the RRS concerning personal floatation devices and other required equipment. All yachts

are reminded that under fundamental rule 4 "The responsibility for a boat's decision to participate in a race or to continue racing is her's alone.

- 15.2 Boats shall not impede the passage of a vessel which can safely navigate only within a narrow channel. Boats interfering with other vessels may be subject to protest by the Race Committee or contestants and possible disqualification.
- 15.3 In accordance with Rule 42.3(h), providing no significant advantage is gained, a boat may employ propulsion using an engine or other method to remain clear of a non-racing vessel when required by Inland Rules.
- 15.4 Racing Rule 41 is changed such that a boat accepting assistance under Fundamental Rule 1.1 is exempt from the provisions of RRS 41 - Outside Help. Capsized sailboats are encouraged to accept assistance as necessary.
- 15.5 The Race Committee boat will monitor Marine VHF Channel 78.

16 PRIZES

Results will be announced and prizes presented at the Rudder Club following the race.



Race Marks
GPS Position

Range and Bearing between Marks

1	N30° 17.798'
	W81° 40.440'
3	N30° 16.723'
	W81° 40.219'
5	N30° 15.013'
	W81° 39.470'
7	N30° 13.312'
	W81° 39.078'
9	N30° 12.272'
	W81° 39.241'
E	N30° 11.700'
	W81° 40.900'
	(PA)

From	To	Range n.m.	Bearing Mag.
E	7	2.3	048°
E	9	1.5	073°
1	3	1.1	175°
1	5	2.8	168°
3	1	1.1	355°
3	5	1.7	163°
3	7	3.7	169°
5	1	2.8	348°
5	3	1.7	343°
5	7	1.9	175°
5	9	2.9	181°
7	E	2.3	229°
7	1	4.6	350°
7	3	3.6	349°
7	5	1.9	355°
7	9	1.1	193°
9	E	1.5	253°
9	5	2.9	001°
9	7	1.1	013°

Note: Mark E is no longer a permanent mark but may be substituted for by a yellow inflated cylinder. It will be referred to as "E" on course boards using river marks.